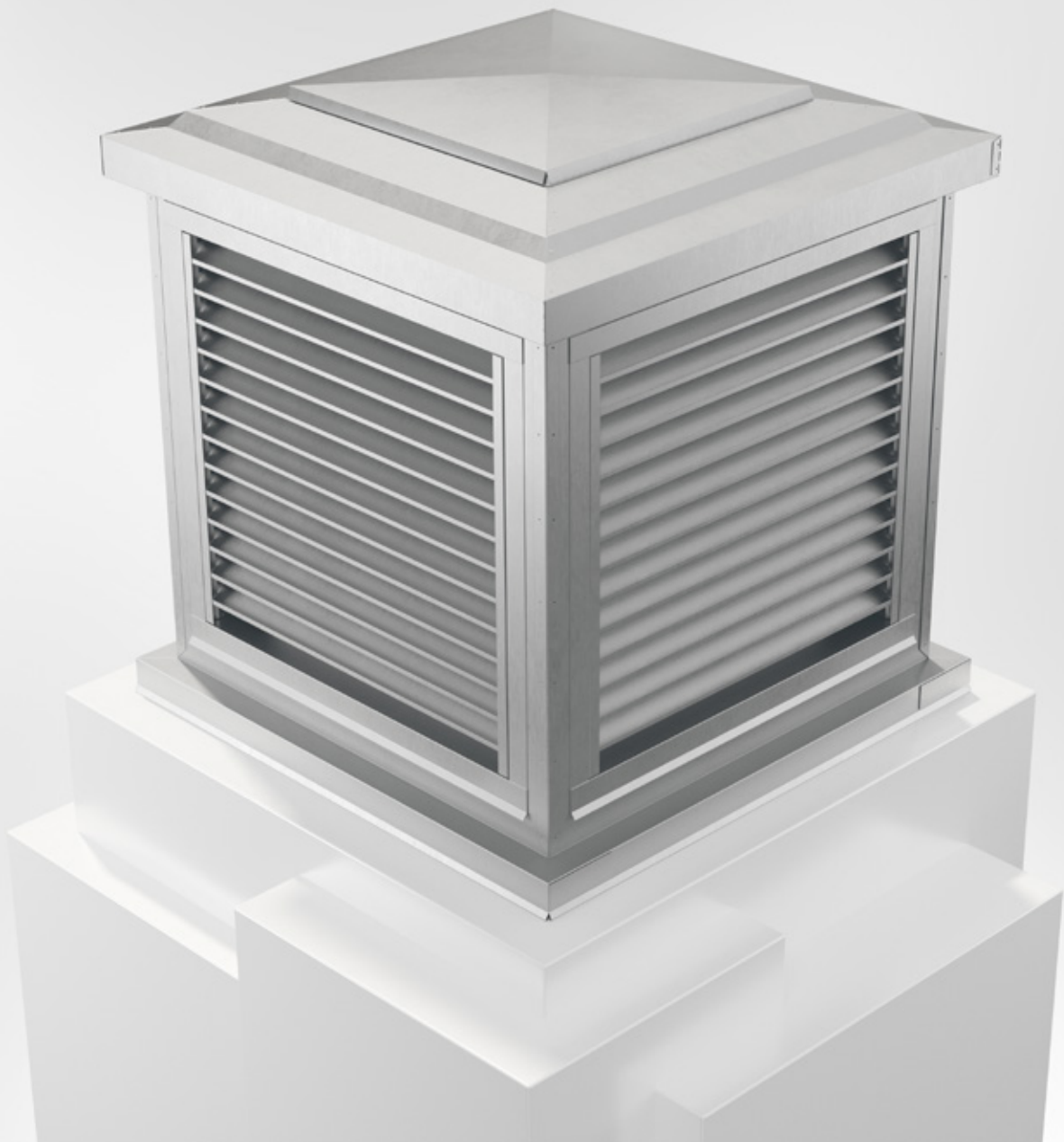


# BRSI

Intake Air Cowl



COWLS



01/03/2022

[www.bevent-rasch.com](http://www.bevent-rasch.com)



**BEVENT RASCH**

AIR SOLUTIONS – FOR A BETTER TOMORROW



Design also available as Exhaust Air Cowl BRSF.

## Quick facts

- Sizes from 200 mm to 2000 mm
- Design equal to Combination Cowl BRSK and Exhaust Air Cowl BRSF
- Suitable for Roof inlet BRTG
- Galvanized sheet steel as standard
- Available in powder coated finish corrosivity class C4
- The cowl can be customized
- Available in MagiCAD

## Use

BRSI is an intake air cowl for use in air conditioning and industrial plants. It has a design that resembles a traditional chimney. The intake air is taken in through removable louver inserts. These are equipped with rodent screens on the inside. BRSI can be equipped with roof inlet BRTG for passage and access through outer roofing. Eyebolts can be supplied as accessories.

## Water separation

The limit for water penetration is 2,0 m/s, calculated for the total louver area. Grilles are of the type BRYH, with improved water deflection.

## Material, surface treatment

The air cowl is manufactured as standard in galvanized sheet steel and can also be supplied in a painted finish (C4) in any colour, see [www.bevent-rasch.com](http://www.bevent-rasch.com). The air cowl can also be supplied in Magnelis or in stainless steel EN 1.4404 (AISI 316L).

## Special

The air cowl can be supplied in many different custom designs in terms of dimensions, choice of material, etc. Contact Bevent Rasch.

## Specification

Example:

**Intake Air Cowl**

**BRSI - 300 - 1 - 0**

Size, see size table

Material:

Galvanized sheet steel = 1

Stainless AISI 316L – EN 1.4404 = 3

Magnelis = 5

Surface treatment:

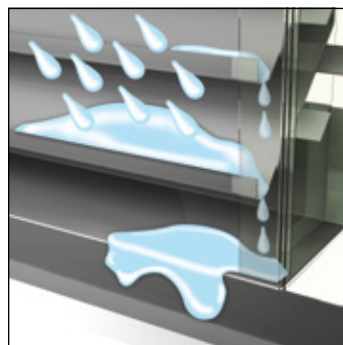
Unfinished = 0

Powder coated = 1\*

\* Colour code should be stated in plain text, see [www.bevent-rasch.com](http://www.bevent-rasch.com)

**Accessories:**

**Roof inlet BRTG**



Drains on the front edges of the slats divert water to the sides and out at the bottom of the grille.



**Dimensions**

Size	B	C	E	G	Fits BRTG	Weight kg	Total area int. louvre m <sup>2</sup> *)
200	400	600	400	300	3	14	0,2
300	500	650	500	400	4	20	0,37
400	600	700	600	500	5	27	0,6
500	700	800	700	600	6	36	0,86
600	800	900	800	700	7	46	1,27
800	1000	1000	1000	900	9	76	2,04
1000	1200	1050	1200	1100	11	97	2,6
1200	1400	1100	1400	1300	13	120	3,62
1400	1600	1200	1600	1500	15	151	4,79
1600	1800	1300	1800	1700	17	186	6,12
1800	2000	1400	2000	1900	19	223	7,61
2000	2200	1500	2200	2100	21	281	9,26

\*) Free grille area = 55% of total intake grille area

**Selection chart**

