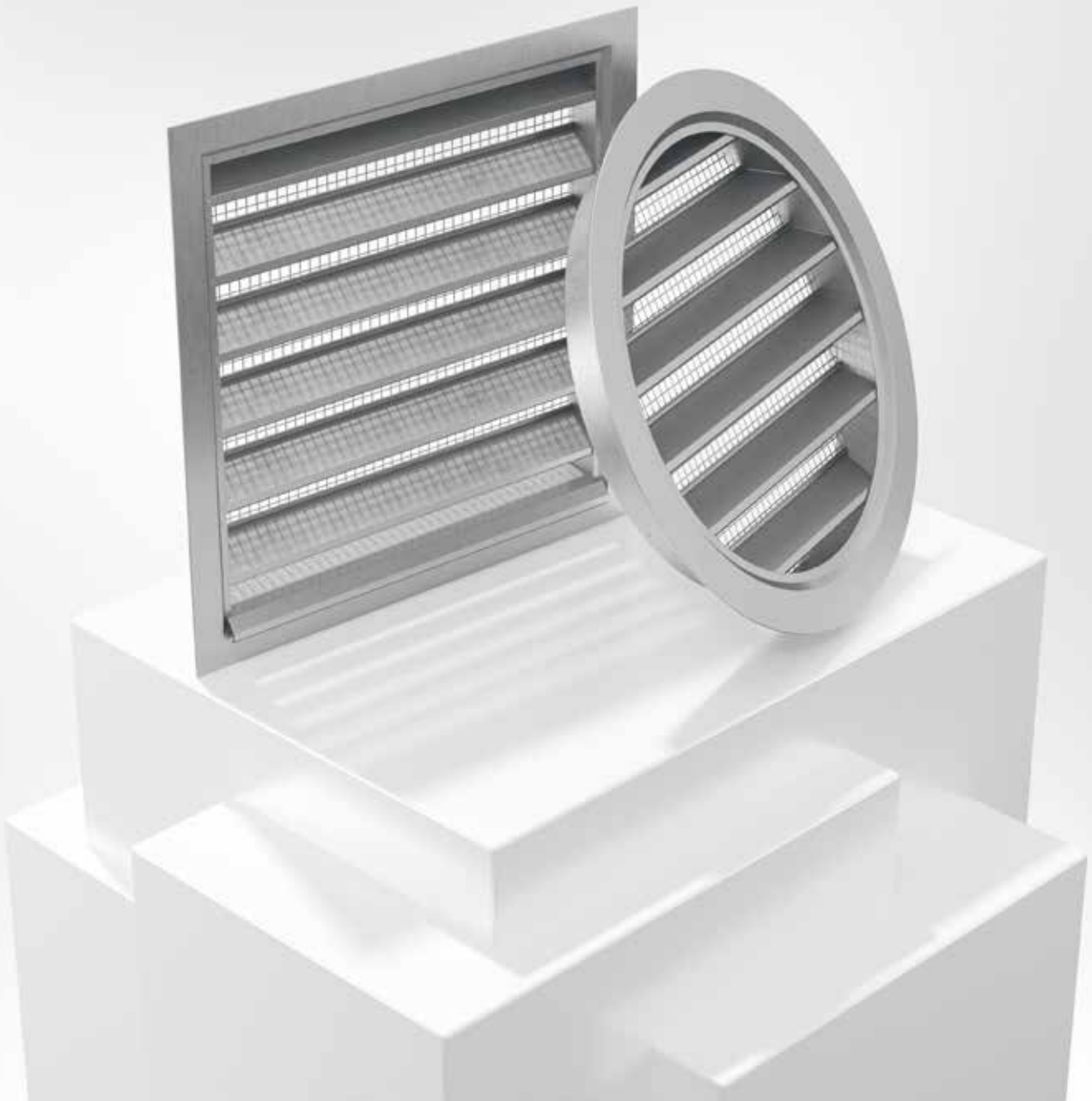


# BRYA

Outer wall louvre



LOUVRES



11/09/2017





## Quick facts

- Sizes from 200-200 mm to 2000-2000 mm resp. Ø250 mm to 2000 mm or special
- Can be made larger in a split version
- Made of aluminum
- Also available in powder coated or anodized version
- Delivered with a rodent proof wire mesh
- Can be equipped with electric defrosting
- Available in MagiCAD

## Use

BRYA is an aluminum louvre with attractive appearance intended for intake air and exhaust air. The louvre is available in two versions, BRYA-1 (rectangular) and BRYA-2 (circular). BRYA consists of a mounting frame with cover flange and droplet separation. Delivered with a rodent proof wire mesh on the inside. Rectangular grilles with one side larger than 2000 mm are delivered in a split version. Framework to mount between the louvre sections can be supplied as an accessory.

## Water separation

BRYA is tested according to the standard EN 13030:2001. When dimensioning the intake air, a maximum of 2 m/s across the connection area is recommended.

## Material, surface finish

BRYA is manufactured in extruded aluminium profiles (C4) with 1,5 mm material thickness. It can also be supplied in an anodized version or in a painted finish (C4) in any colour, see [www.bevent-rasch.com](http://www.bevent-rasch.com). The mesh is galvanized.

## Specification

Example:

**Louvre** **BRYA - 1 - 600 - 400 - 1 - 0**

Version:

Rectangular	= 1	
Circular	= 2	

Size:

Width x Height or Diameter in mm

Surface finish:

Aluminium, unfinished	= 1	
Natural anodized aluminium	= 2	
Surface finish, painted	= 4	

Without mounting frame = 0

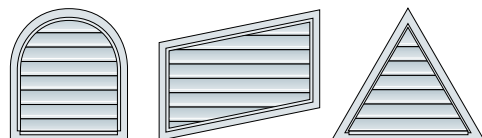
With mounting frame = 1

(applies only for BRYA-1)

**Accessory:** Electrical defrosting (state in plain text)

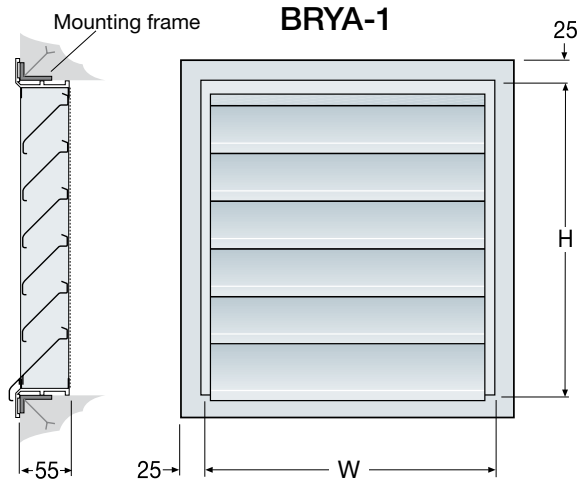
## Special

BRYA can also be delivered with electric defrosting. It can also be manufactured in various different shapes, contact Bevent Rasch.





**Dimensions**

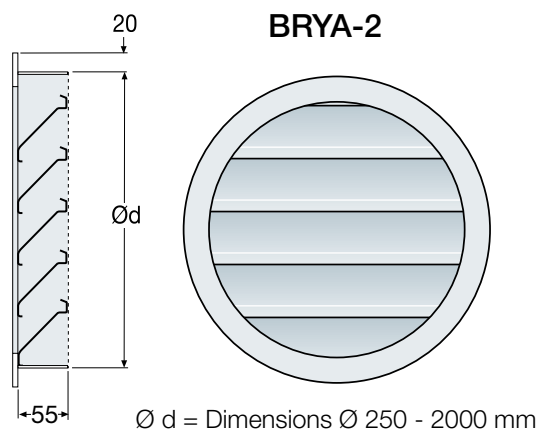


W or H
200 - 250 - 300 - 400 - 500 - 600 - 700 - 800 - 900 - 1000 - 1100 1200 - 1300 - 1400 - 1500 - 1600 - 1700 - 1800 - 1900 - 2000

Weight (-1 & -2): 10 kg/m<sup>2</sup>

W x H or Ø d = Cut-out dimensions

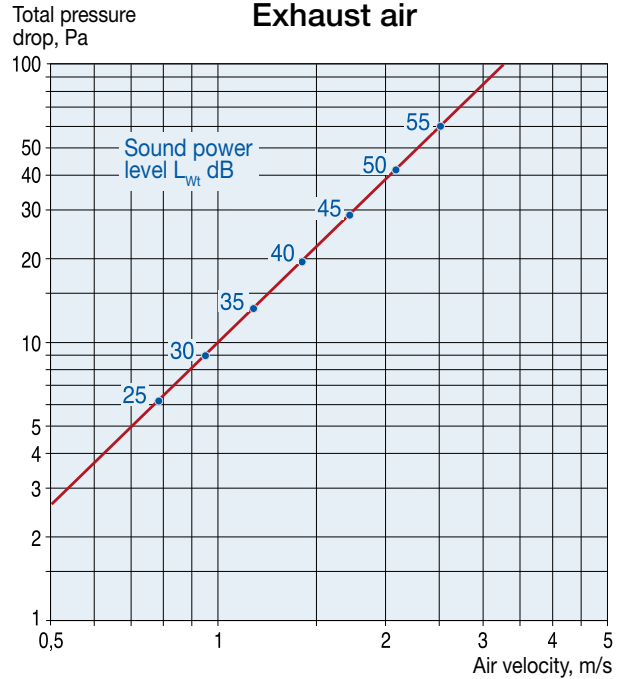
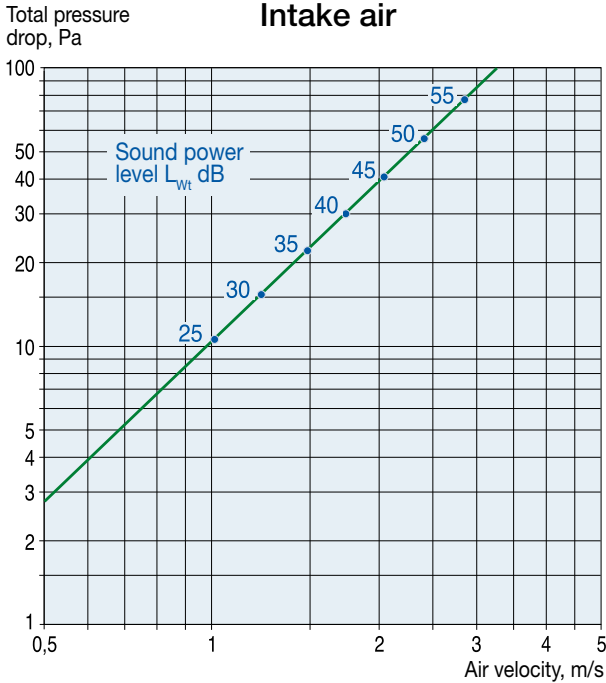
Louvres with any side larger than 2000 mm are delivered in split version.  
A framework between louvre parts can be supplied as an accessory.





## Size chart

The air velocity is calculated on the connection area (gross area).  
The louvre's free area is 66% of the connection area.



## Sound data

Correction of sound power level,  $L_w$ , for different sizes

$$L_w = L_{wt} + K_1$$

Grille area, m <sup>2</sup>	0,12	0,25	0,5	1,0	2,0	3,0	4,0
$K_1$	-3	0	3	6	9	10,5	12

Correction of sound power level,  $L_{Wok}$ , in octave band

$$L_{Wok} = L_w + K_{ok}$$

Centre frequency Hz	125	250	500	1000	2000	4000	8000
$K_{ok}$	1	0	-5	-5	-10	-17	-22

Reductions in noise level depend on the distance from BRYA and the connection area.

