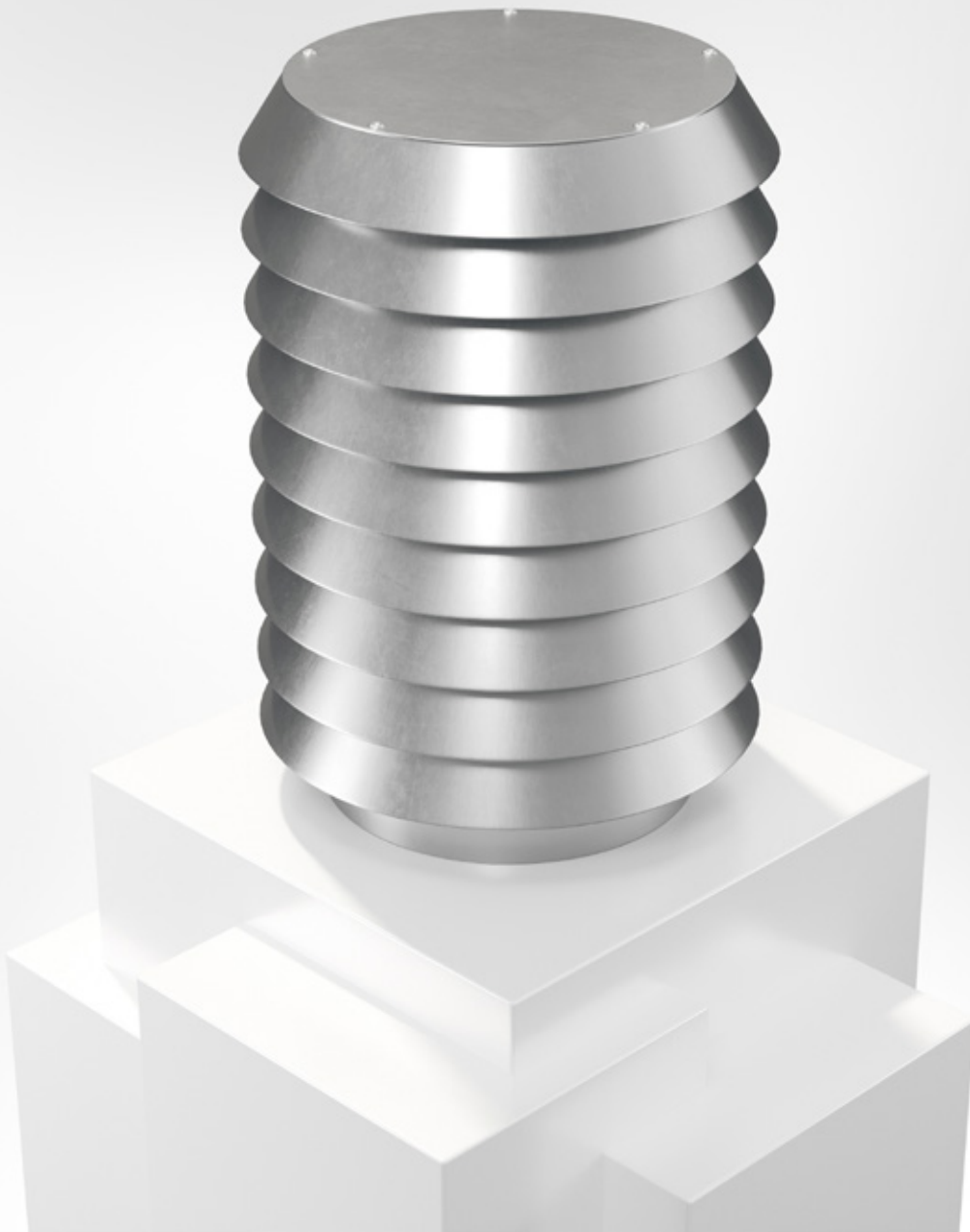


BRLH

Intake or Exhaust Air Cowl



COWLS



08/12/2023



Intake or Exhaust Air Cowl BRLH



Quick facts

- Sizes from 125 mm to 1500 mm
- Sizes 125-315 supplied with sleeve connection
- Sizes 400 -1500 supplied with flange connection
- Sizes 1250 and up equipped with eyebolts
- Suitable for Roof inlet BRTG or BRTL
- Galvanized sheet steel as standard
- Available in powder coated finish corrosivity class C4
- Can be supplied in many different custom versions

Use

BRLH is a circular ventilation cowl for use in comfort and industrial facilities. It can be used for intake or exhaust air. The air is taken in or exhaust from the lower edge of the cowl's fins. Sizes 125-315 are supplied with sleeve connections, sizes 400 -1500 are supplied with flange connection.

From size 1250 and up the cowl is equipped with eyebolts as standard. These can be supplied as accessories for smaller sizes.

BRLH can be fitted with roof inlet BRTG or BRTL for passage and access through outer roofing.

Material, surface treatment

The air cowl is manufactured as standard in galvanized sheet steel and can also be supplied in a painted finish (C4) in any colour, see www.bevent-rasch.com

The air cowl can also be supplied in aluzink AZ185 or in stainless steel EN 1.4404 (AISI 316L).

Specification

Example:

Air Cowl

BRLH - 400 - 1 - 0

Size

see size table

Material:

Galvanized sheet steel

= 1

Stainless AISI 316L – EN 1.4404

= 3

Aluzinc AZ185

= 4

Surface treatment:

Unfinished

= 0

Powder coated

= 1*

* Colour code should be stated in plain text, see www.bevent-rasch.com

Accessories:

Roof inlet BRTG

Roof inlet BRTL (size 125-200)

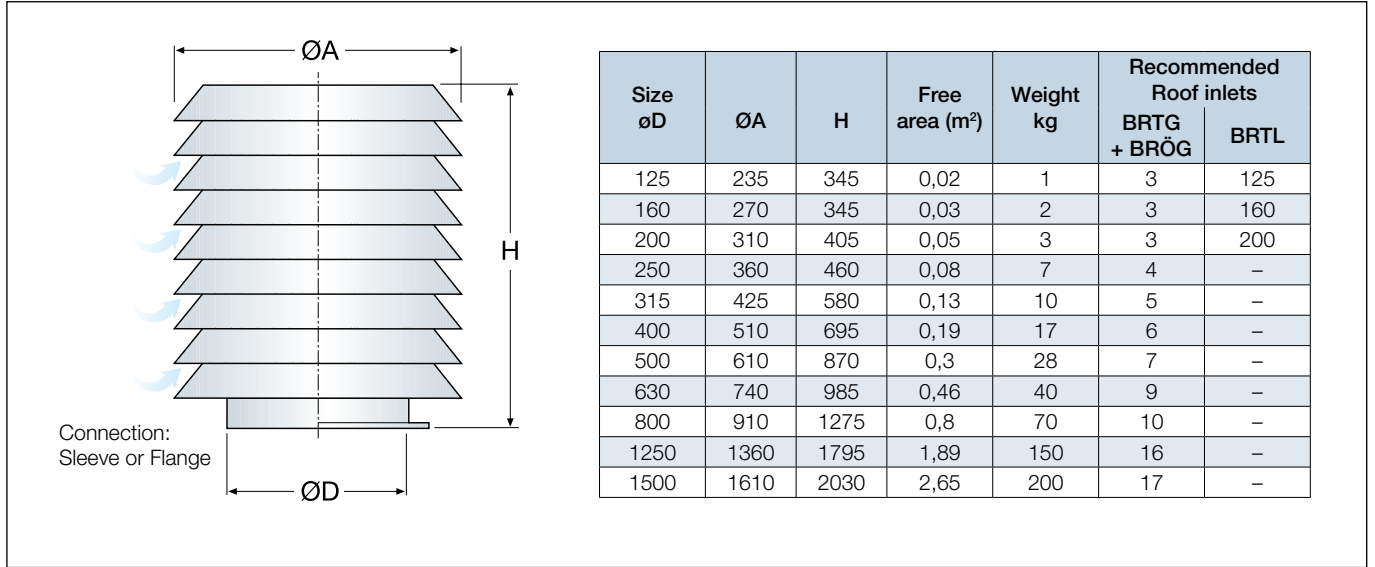
Counter flange BRFL

Special

The air cowl can be supplied in many different custom designs in terms of dimensions, choice of material, etc. Contact Bevent Rasch.

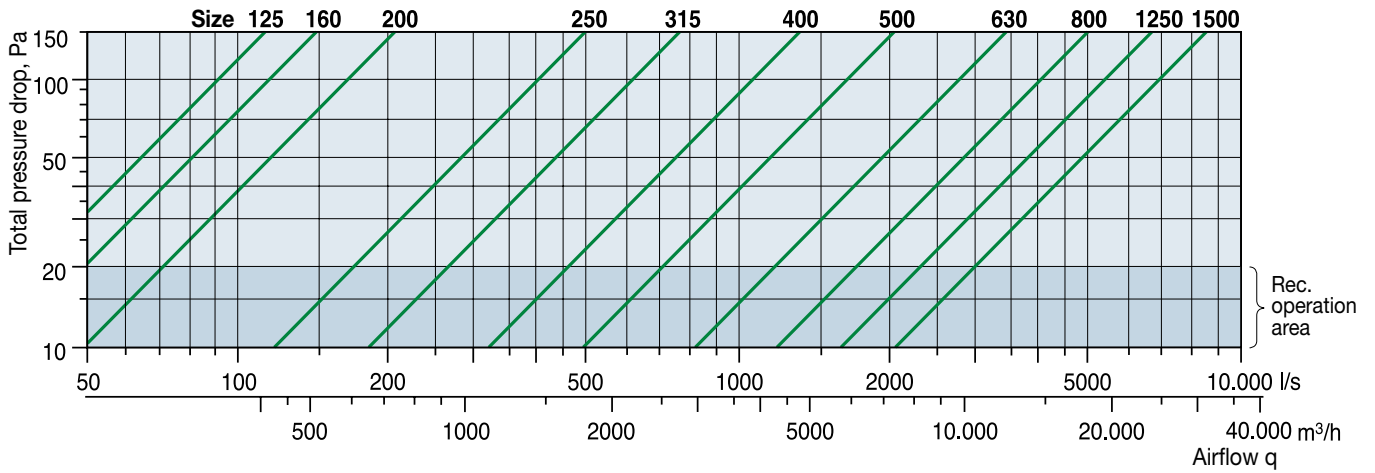


Dimensions



Selection chart

Intake air



Exhaust air

