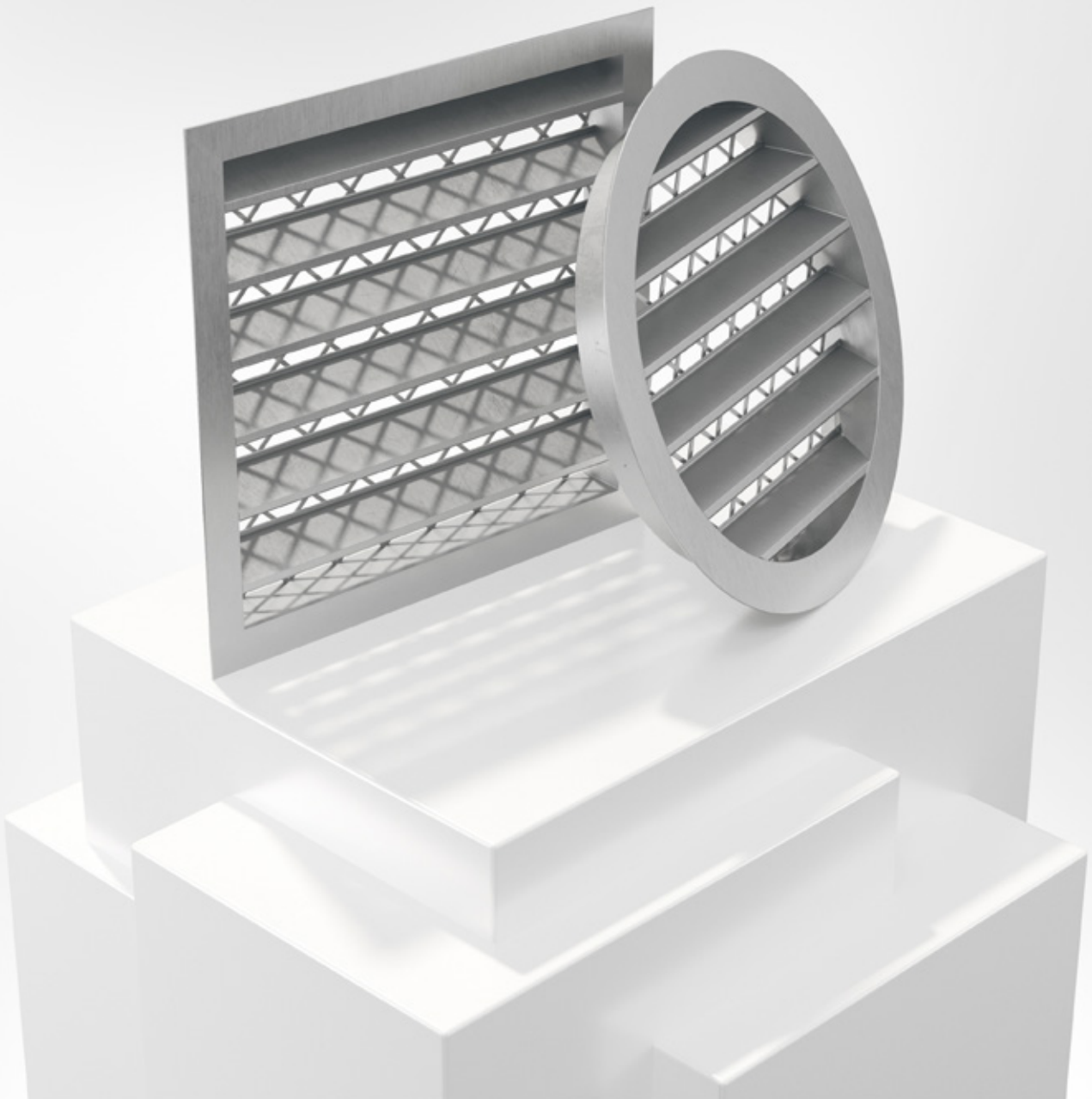


BRYJ

Louvre



LOUVRES



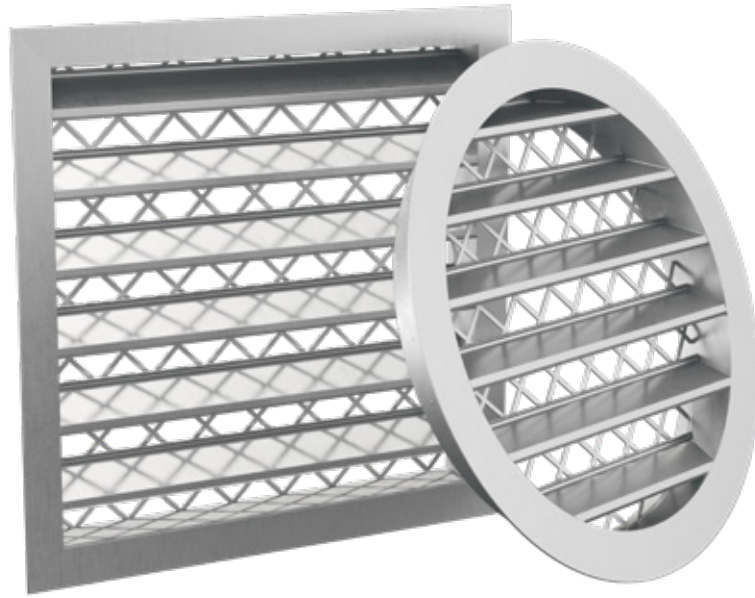
18/01/2021

www.bevent-rasch.com



BEVENT RASCH

AIR SOLUTIONS – FOR A BETTER TOMORROW



Quick facts

- Size from 100-100 mm to 200-200 mm resp from Ø100 mm to Ø500 mm
- Manufactured in one piece in die-cast aluminium
- It is also available painted (C4)
- Insect-proof wire mesh as standard
- Available in MagiCAD

Use

BRYJ is a simple cast aluminium grille for intake or exhaust air. The louvre is available in two versions, BRYJ-1 - rectangular, and BRYJ-2 - circular. The louvre is fitted with an insect-proof wire mesh as standard

Water separation

BRYJ is tested according to the standard EN 13030:2001. When dimensioning the intake air, a maximum of 2 m/s across the connection area is recommended.

Material, surface treatment

The louvre is manufactured in one piece in die-cast aluminium with 5 mm material thickness. It is also available painted (C4).

Specification

Examples:

Louvre **BRYJ - 2 - 125 - 0**

Version:

Rectangular = 1
Circular = 2

Size:

Width x Height
alt. Diameter in mm
see size table

Surface treatment:

Unfinished = 0
Surface finish = 1*

* Colour code should be stated in plain text, see www.bevent-rasch.com



Dimensions

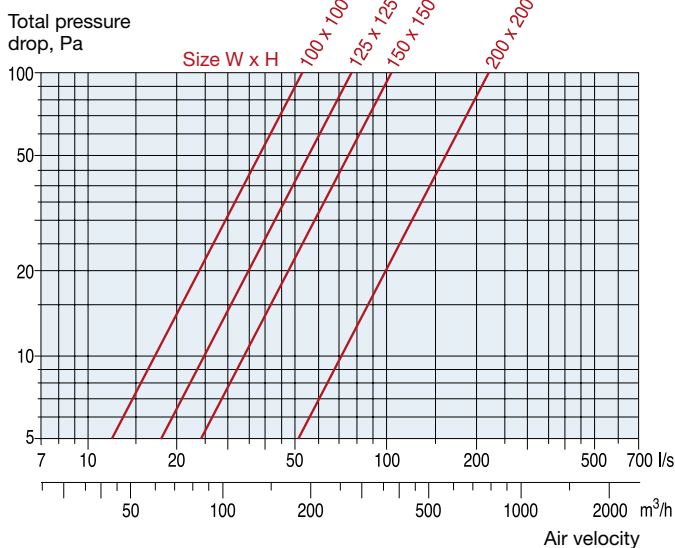
Size W x H	B ₁ x H ₁	Weight, kg
100 x 100	130 x 130	0,2
125 x 125	155 x 155	0,3
150 x 150	180 x 180	0,5
200 x 200	230 x 230	0,7

Size Ø d	ØD	H	Weight, kg
100	125	20	0,2
125	150	20	0,2
160	185	20	0,3
200	225	20	0,5
250	275	20	1
315	350	20	1,5
400	440	40	3
500	540	40	5,1

Selection chart

The free area of the louvre is approx. 80% of the connection area. Some variation can occur at different sizes.

BRYJ-1



BRYJ-2

