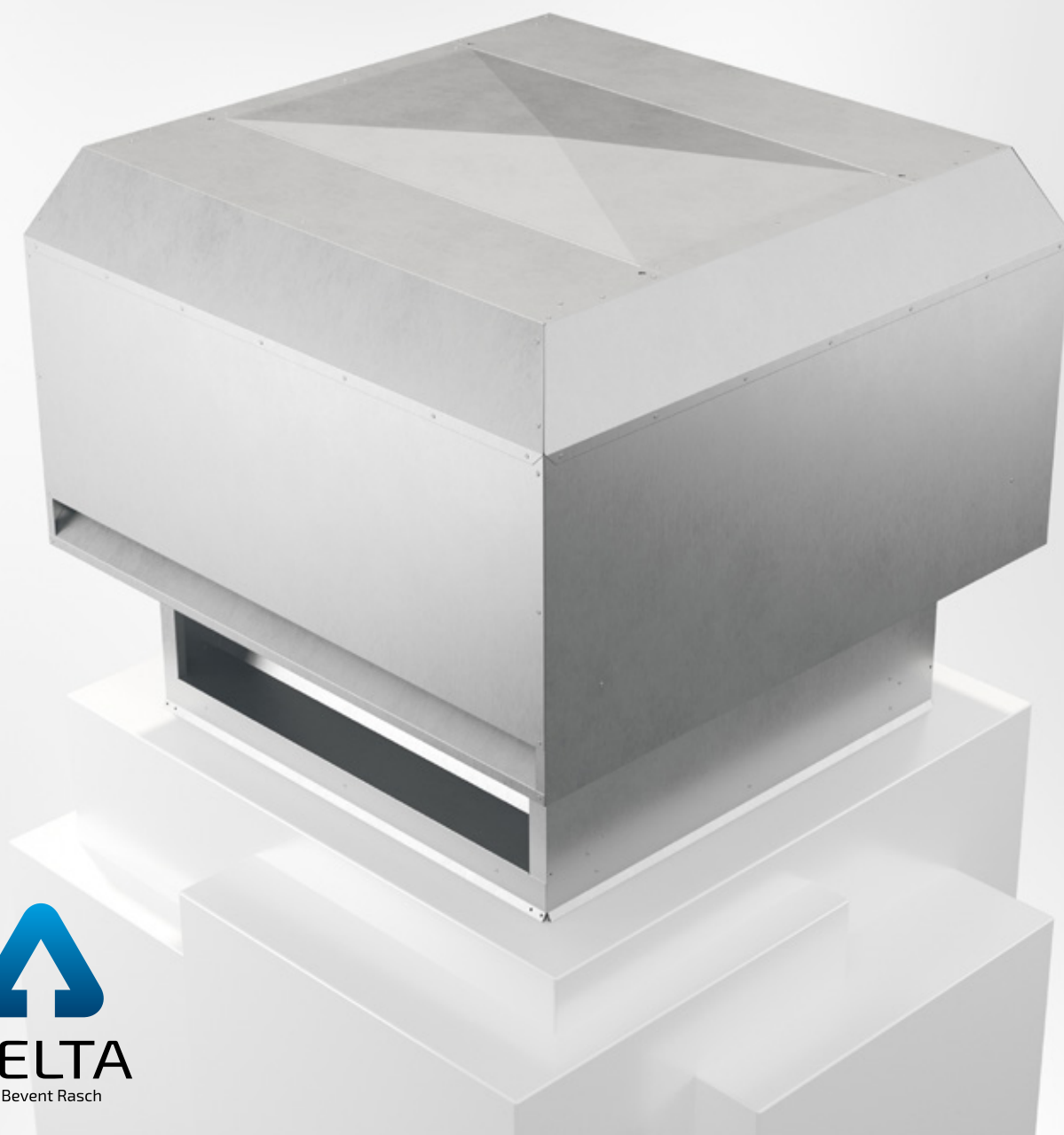


DELTA-UH

Intake Air Cowl



COWLS



03/03/2022

www.bevent-rasch.com



BEVENT RASCH

AIR SOLUTIONS – FOR A BETTER TOMORROW



Design is also available as Exhaust Air Cowl DELTA-AH and as Combination Cowl DELTA-KH.

Quick facts

- Sizes for flows from 100 l/s to 15.000 l/s
- Design similar to Exhaust Air Cowl DELTA-AH and Combination Cowl DELTA-KH
- Air intake well protected from rain
- Integrated lifting points
- Available in MagiCAD

Use

Delta-UH is an intake air cowl for use in comfort and industrial facilities. The outdoor air is taken in on the lower edge of the cowl. The intake opening is covered with an insect-proof wire mesh. DELTA-UH is supplied as standard with integrated lifting points to facilitate installation. DELTA-UH can be equipped with roof inlet BRTG for passage and access through outer roofing. Supplied with integrated lift points.

Material, surface treatment

The air cowl is manufactured as standard in galvanized sheet-steel, corrosivity class C3 and can be supplied finished corrosivity class C4 in the desired colour, see www.bevent-rasch.com. The air cowl can also be supplied in the new material Magnelis in corrosivity class C5, Aluzinc AZ185 or stainless steel AISI 316L (EN 1.4404).

Special

The air cowl can be supplied in many different custom designs concerning dimensions, choice of material, etc. CFD-simulation can also be performed for custom designs. Please contact Bevent Rasch by email info@bevent-rasch.se.

Specification

Examples:

Intake Air Cowl **DELTA-UH - 300 - 1 - 0**

Size, see size table

Material:

Galvanized sheet steel	= 1
Stainless AISI 316L – EN 1.4404	= 3
Aluzinc AZ185	= 4
Magnelis C5	= 5

Surface treatment:

Unfinished C3	= 0
Painted finish C4	= 1*

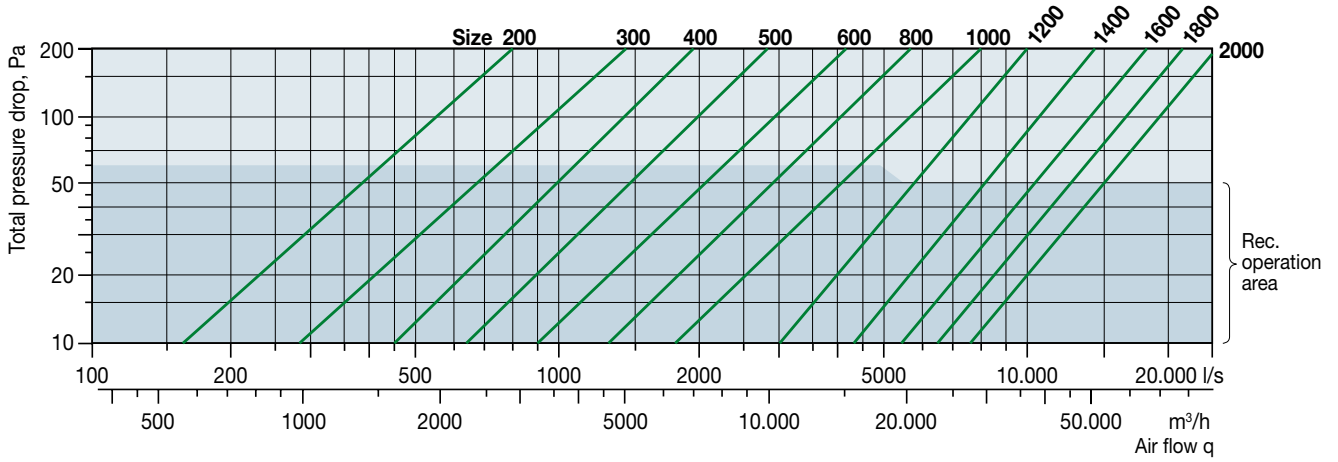
* Colour code should be stated in plain text, see www.bevent-rasch.com

Accessories:

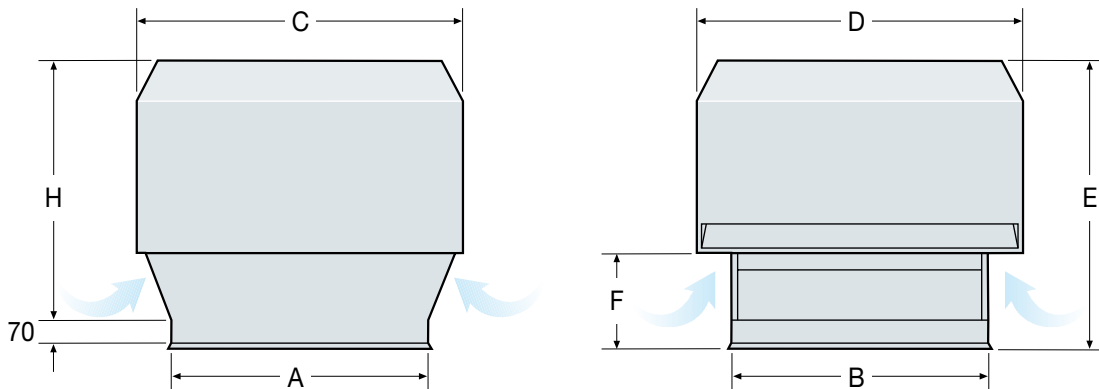
Roof inlet BRTG, see www.bevent-rasch.com



Selection chart



Dimensions



Size	A	B	C	D	E	F	H	BRTG	Weight kg
200	400	400	510	510	505	195	405	3	13
300	500	500	635	635	605	220	505	4	19
400	600	600	760	760	710	245	610	5	27
500	700	700	890	890	810	270	710	6	35
600	800	800	1015	1015	910	300	810	7	45
800	1000	1000	1270	1270	1110	350	1010	9	68
1000	1200	1200	1530	1530	1315	405	1215	11	95
1200	1400	1400	1780	1780	1520	455	1420	13	141
1400	1600	1600	2035	2035	1720	510	1620	15	181
1600	1800	1800	2290	2290	1920	560	1820	17	225
1800	2000	2000	2545	2545	2125	610	2025	19	274
2000	2200	2200	2800	2800	2325	665	2225	21	328