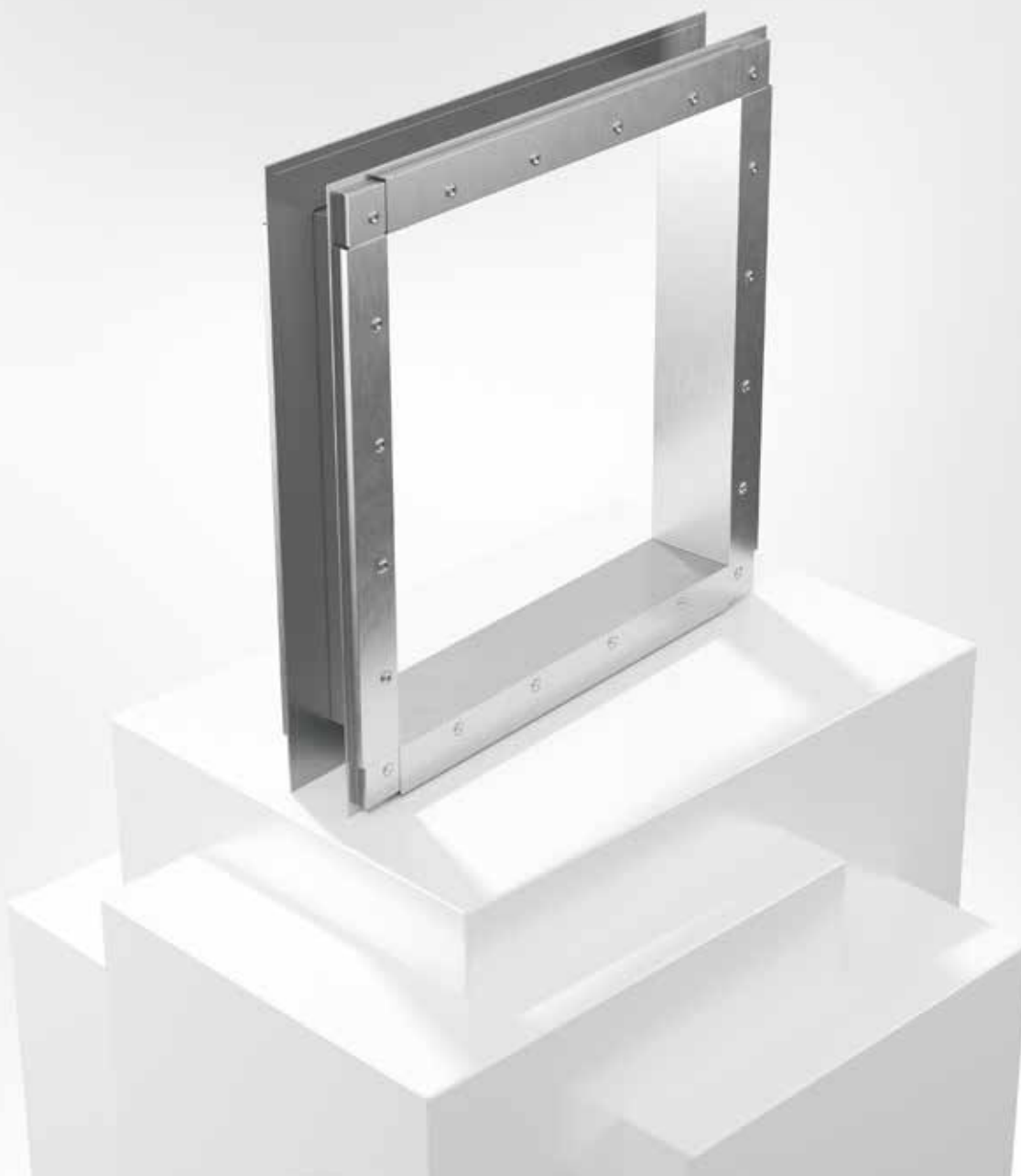


RBVG

Wall duct



FIRE SAFETY



13/09/2017

www.bevent-rasch.com



BEVENT RASCH

AIR SOLUTIONS – FOR A BETTER TOMORROW



Quick facts

- Sizes from 200 x 200 mm to 1500 x 1500 mm

Use

Wall duct in combination with walls or joist structures to achieve an optimal damper or duct system connection. The wall duct creates a tidy, sealed connection to the building element and requires neither refinishing nor painting. Also used in combination with smoke dampers for the fire separation of ventilation systems in buildings.

Design

The wall duct is supplied complete with fixings for a flange connection and extenders for connection to a duct system.

Material and surface finish

As standard, casing and components of hot-dip galvanized steel sheet in accordance with environmental class C3. For a higher environmental class, stainless steel casing and components can be supplied.

Specification

Example:

Wall Duct **RBVG - 500 - 300 - 300 - 0 - 1**

Size

Width x Height (W x H), mm

Length, mm

Insulation,

Without insulation = 0

Connection, see dimensional drawing

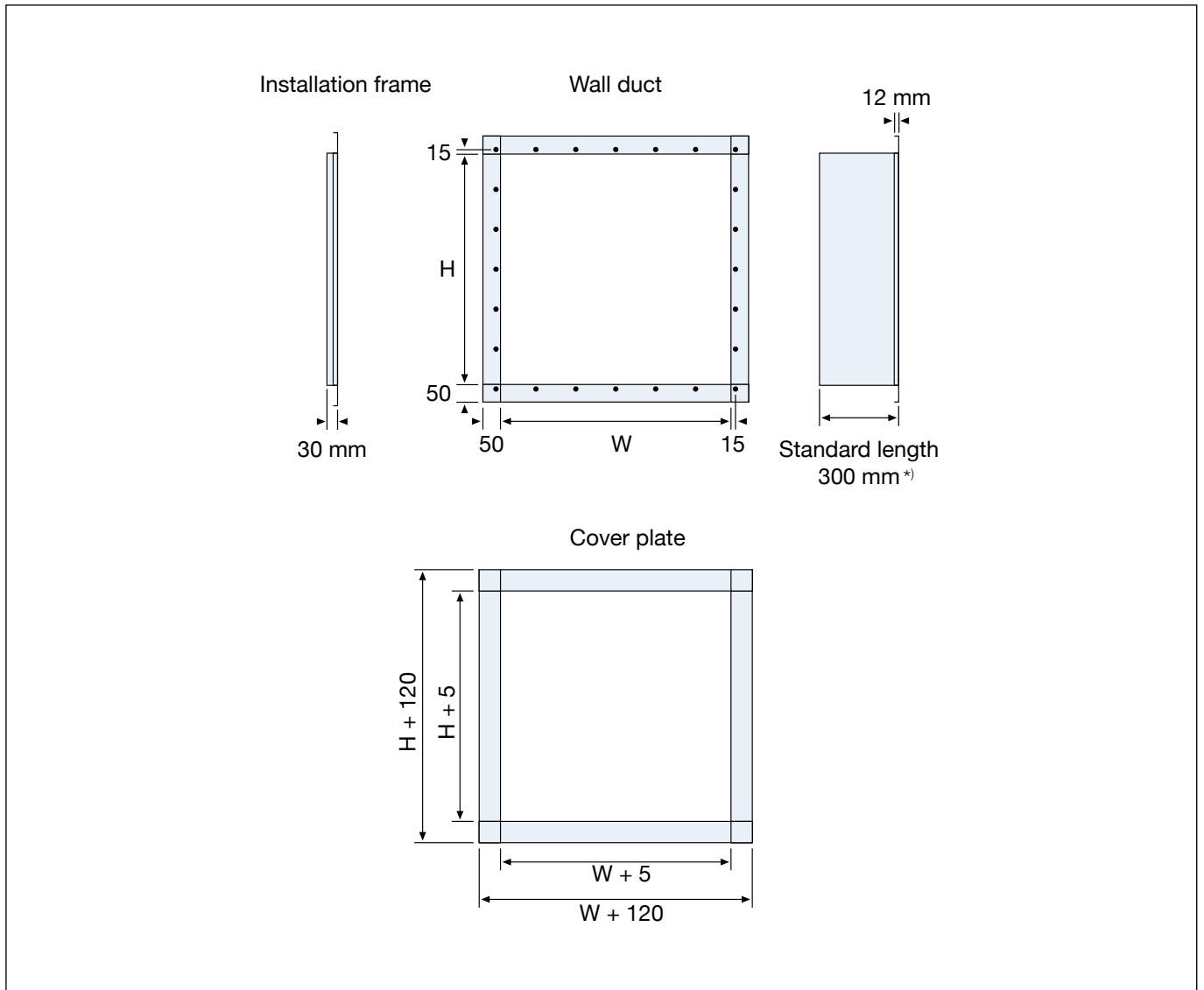
Flange, 30 mm

= 1

Note. Lengths other than 300 mm shall be clearly specified.



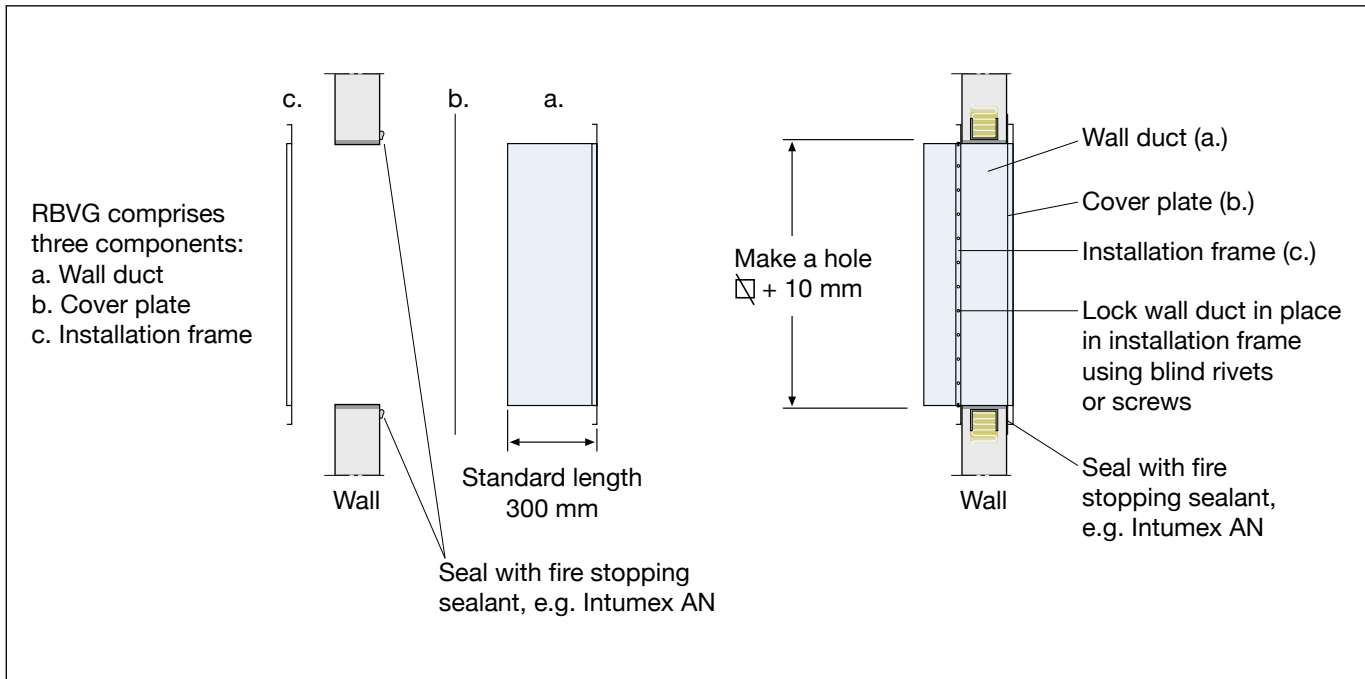
Dimensions and weight



^{*)} Clearly specify lengths other than 300 mm when ordering.



Installation instructions for wall duct RBVG



1. Make a hole, corresponding to the duct's nominal dimensions + 10 mm, in the building element.
If installing in plasterboard, a steel reinforcement frame must be used.
2. Apply fire rated sealant (such as Intumex AN) to the building element around the hole, approx. 10 mm from the edge.
3. Fit the cover plate over the wall duct and affix the unit to the building element with the fire rated sealant.
4. Slide on the installation frame from the opposite side and affix with clamps or the like. Ensure that the cover plate and the fire rated sealant comprise a tight seal against the building element.
5. Lock the wall duct in place in the installation frame with screws or blind rivets spaced 100-150 mm apart.
6. Attach the appropriate joint for the duct and connect.
7. If the duct system is not connected, for example, when installed as a termination device or transfer air device, fit non-combustible grilles designed for the damper on the unconnected sides. The minimum distance between the damper blade in the open position and the grille is 50 mm.