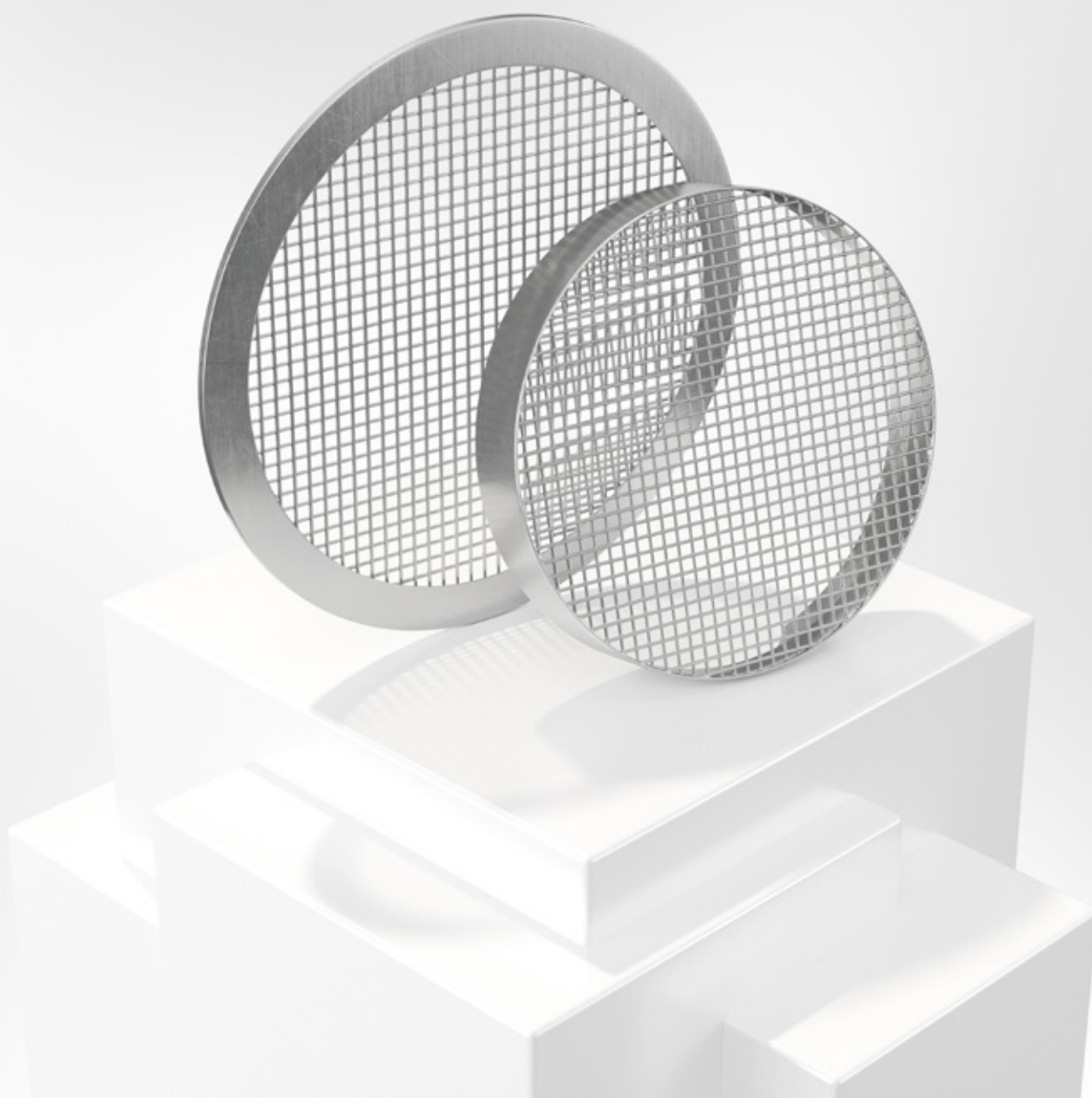


# BRTO

Wire mesh louvre



LOUVRES



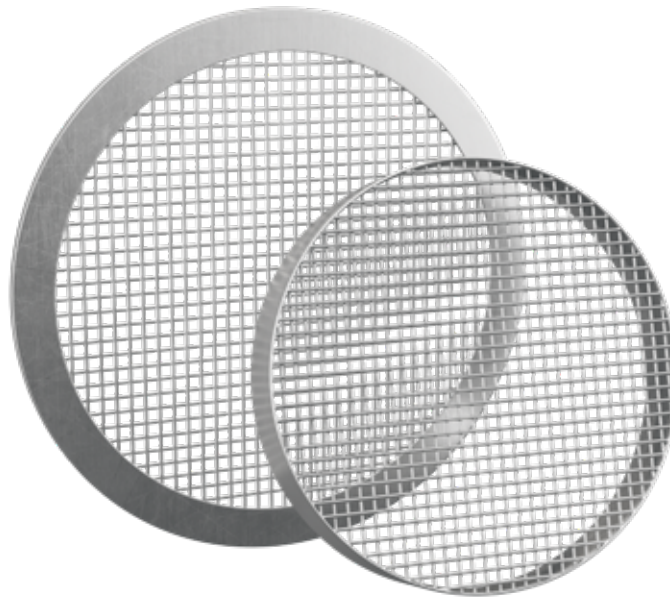
12/05/2022

[www.bevent-rasch.com](http://www.bevent-rasch.com)



**BEVENT RASCH**

AIR SOLUTIONS – FOR A BETTER TOMORROW



## Quick facts

- Sizes from Ø80 mm to Ø1000 mm
- Spigot connection as standard, can also be performed with flange or socket connection
- Galvanized sheet steel as standard.  
Can also be supplied in acid proof stainless steel.
- Available in powder coated finish corrosivity class C4
- Available in MagiCAD

## Use

BRTO is a circular protective louvre for duct end installation. The louvre is manufactured with welded wire mesh, mesh sizes 10 x 10 mm for BRTO-1 & 3. BRTO-2 has a perforated plate with punched square 10 mm holes. As standard the wire mesh is attached in a circular spigot connection (BRTO-1) alternative in a flange of hot galvanized sheet steel (BRTO-2) or a socket connection (BRTO-3).  
Free area BRTO-1 & 3 = 91%.  
Free area BRTO-2 = 69%.

## Material, surface treatment

The wire mesh louvre is made of galvanized sheet steel and can also be supplied in a painted finish (C4) in any colour, see [www.bevent-rasch.com](http://www.bevent-rasch.com).

The louvre can also be manufactured in stainless steel EN 1.4404 (AISI 316L) or Magnelis.

## Specification

Example:

**Wire mesh louvre**                      **BRTO - 1 - 125 - 1 - 0**

Type:

Spigot (standard)	= 1		
Flange	= 2		
Socket	= 3		

Size, mm

Material:

Galvanized steel	= 1	
Stainless AISI 316L – EN 1.4404	= 3	
Magnelis	= 5	

Surface treatment:

Untreated	= 0	
Surface treatment C4	= 1*	

\* Colour code should be stated in plain text, see [www.bevent-rasch.com](http://www.bevent-rasch.com)



Dimensions

